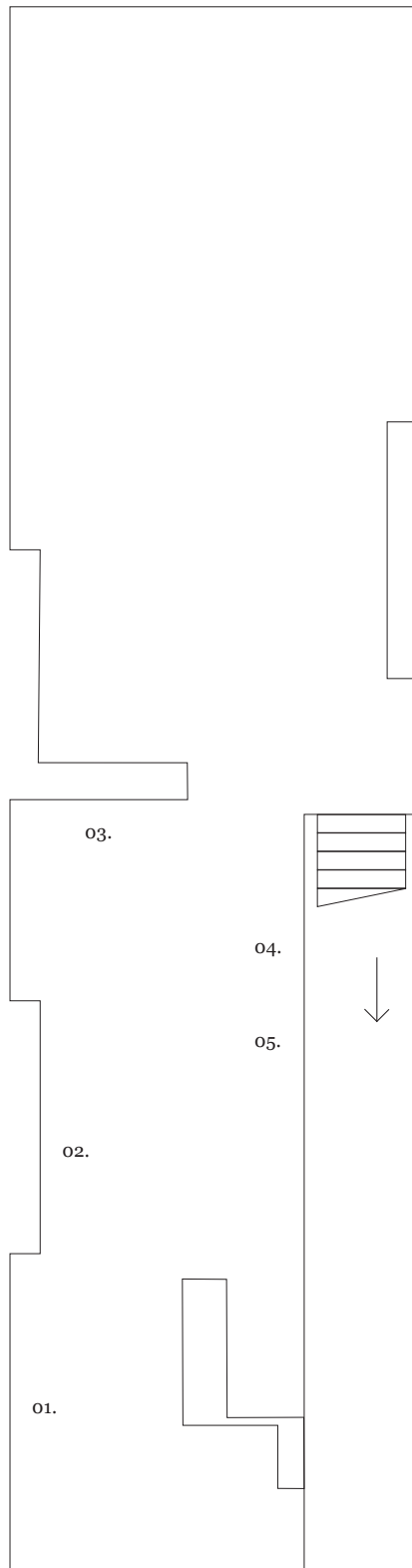


The Same For Everyone

Week 6: Nancy Holt and Hiraki Sawa

26 – 29 August 2020



The sixth chapter of Parafin's summer programme brings together lunar artworks by Nancy Holt and Hiraki Sawa.

Nancy Holt is best known for her works which use sunlight to make her audience conscious of the cyclical nature of the universe, the daily axial rotation of the Earth and its annual orbit around the sun. Holt's primary aesthetic and social interests converge in her public observatories, in particular *Sun Tunnels* (1973-76), *Annual Ring* (1980-81), *Dark Star Park* (1979-84) and *Solar Rotary* (1995), which reflect her determination to 'connect people with the planet earth', and to bring 'the sky down to earth'. However, the moon appears in only a single work in her oeuvre, *O Moon* (1990), one of only three print editions she made. Here *O Moon* is shown alongside an early drawing, *Untitled (Waning Sphere)* (1973), made the year Holt began planning the *Sun Tunnels* and which may relate to the cosmic cycles that work invokes.

Hiraki Sawa is known internationally for videos and installations that create powerful psychological situations by interweaving the domestic and the fantastic. Characterised by quietness and introspection, Sawa's works create compelling interior worlds and meditate upon themes of memory and displacement.

While Sawa is known primarily as a filmmaker, drawing has always occupied a central part in his practice, in both the animations that feature in his films and as an independent medium. Here Sawa shows a pair of delicate pencil drawings, *Wax (Full Moon)* (2014) and *Wax (New Moon)* (2014) which are from a series illustrating the phases of the moon. Each drawing starts out as a meticulous rendering of the lunar surface which Sawa then erases, in some cases nearly completely, to show how the moon appears to us as it waxes and wanes.

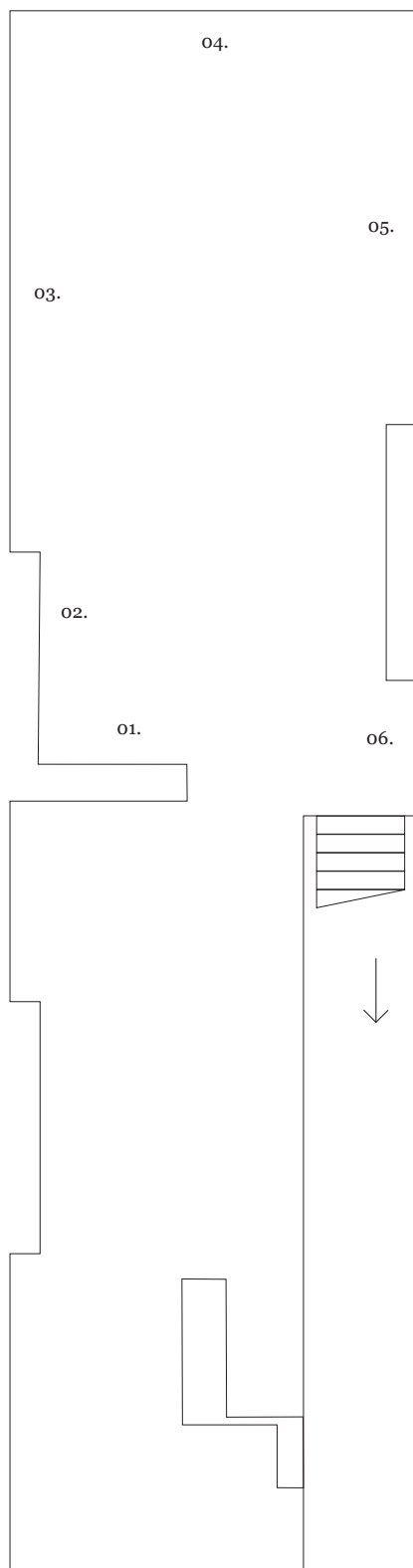
Parafin's second solo presentation of Nancy Holt's work, 'Points of View', will open in late September.

List of Works

-
- 01. Nancy Holt, *O Moon*, 1990
Lithograph on black paper, 76.2 × 56.5 cm
-
- 02. Nancy Holt, *Untitled (Waning Sphere)*, 1973
Pencil on paper, 22.9 × 30.5 cm
-
- 03. Nathan Coley, *The Same For Everyone*, 2017
Aluminium lightbox with LED lamps, 105 × 75 × 8 cm
-
- 04. Hiraki Sawa, *Wax (New Moon)*, 2014
Graphite on paper, 107 × 77.5 cm
-
- 05. Hiraki Sawa, *Wax (Full Moon)*, 2014
Graphite on paper, 107 × 77.5 cm

Gallery Artists

—
26 – 29 August 2020



List of Works

Ground Floor

-
01. Tania Kovats, *All the Islands of the Arctic Circle*, 2014
Ink on layered matte acetate paper and pins, 2 parts, 42 × 30 cm each
-
02. Hugo Wilson, *Object*, 2018
Bronze, 50 × 56 × 40 cm
-
03. Hynek Martinec, *Flaying of Marsyas*, 2019
Oil on canvas, 170 × 240 cm
-
04. Justin Mortimer, *Breed 5*, 2018
Oil and acrylic on canvas, 214 × 153 cm
-
05. Alison Watt, *Volute*, 2018
Oil on canvas, 152.4 × 152.4 cm
-
06. Indrė Šerpytytė, *Pedestal, Neckerchiefs*, 2017
Ink on vinyl and Dibond, aluminium frame, 90 × 92 × 4 cm

Lower Floor (clockwise from base of stairs)

-
- 01-02. Melanie Smith, *Diagram Paintings*, 2019
Oil, acrylic, enamel and encaustic on MDF, Dimensions variable
-
- 03-05. Hiraki Sawa, *iota drawings*, 2016
White ink on unique inkjet prints, 4.5 × 3.5 cm each
-
06. Tim Head, *Living Dead I*, 1987
Acrylic on canvas, 121.9 × 121.9 cm
-
07. Hamish Fulton, *Touching Boulders By Hand, Cairngorms, Scotland*, 2013, 2013. Framed archival inkjet print, 57 × 70 cm
-
08. Hamish Fulton, *Milestones, Wales & England*, 2010, 2010
Framed archival inkjet print, 58 × 45 cm
-
09. Hugo Wilson, *Untitled (Pan Troglodytes)*, 2008
Pencil on tracing paper, 62.5 × 94 cm
-
10. Justin Mortimer, *Djinn II*, 2015
Oil on canvas, 40.5 × 30 cm
-
11. Justin Mortimer, *Kult II*, 2014
Oil on panel, 43 × 25 cm
-
- 12-13. Melanie Smith, *Collages for 'Vortex'*, 2019
Collage on paper, 29 × 25.1 cm each
-
14. Uwe Wittwer, *Blossin*, 2018
Watercolour on paper, 54 × 74 cm